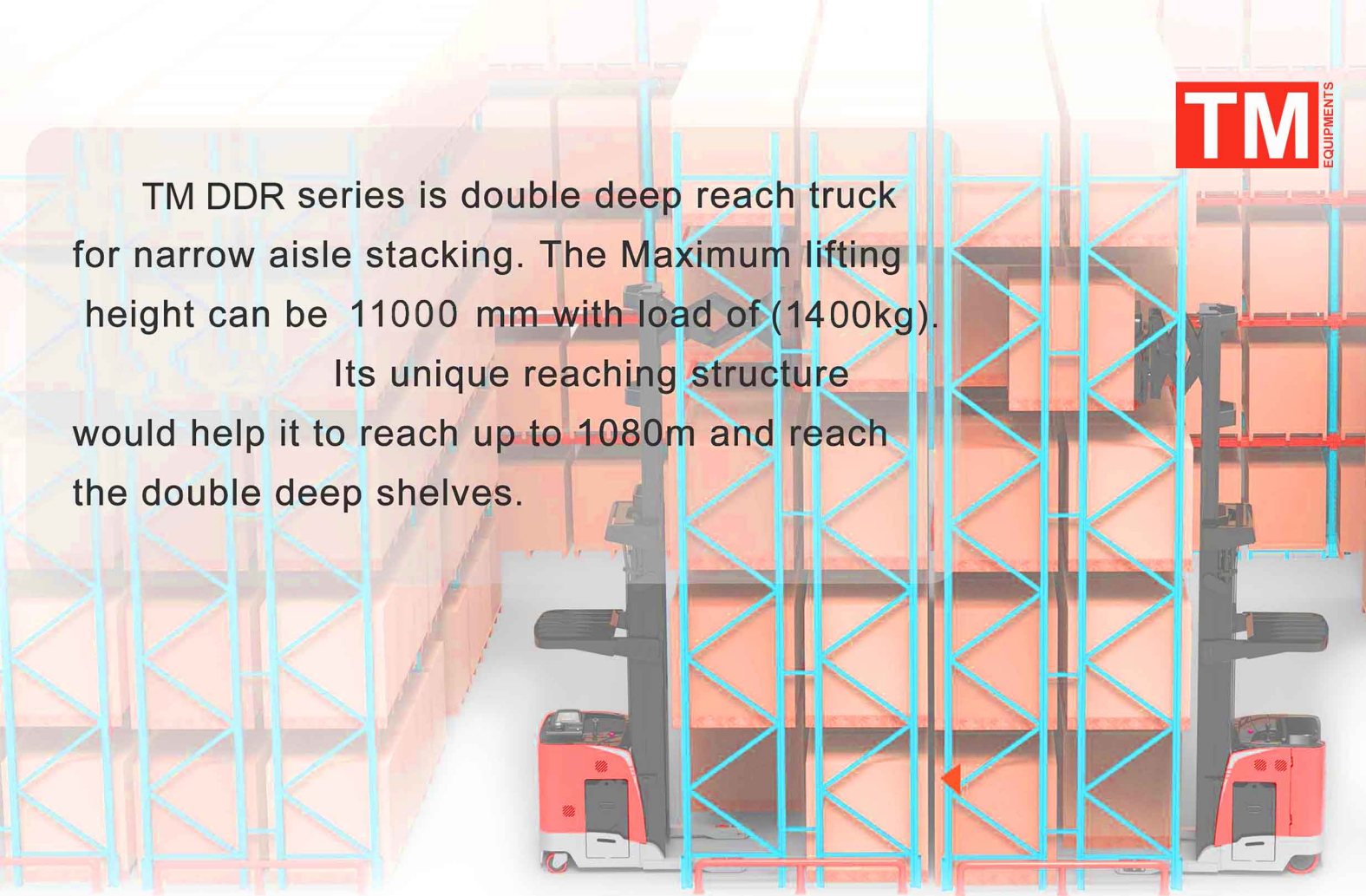


DDR
SERIES

TM DDR series is double deep reach truck for narrow aisle stacking. The Maximum lifting height can be 11000 mm with load of (1400kg).

Its unique reaching structure would help it to reach up to 10800mm and reach the double deep shelves.



Stability :Strong chassis and mast increases durability.

High efficiency and energy-saving : CAN bus main wire and full AC control system, which greatly improves the motor performance and lower the electricity consumption.

High adaptation : Suspension design on driving assembly makes it perfect performance on all kinds of floor.

Easy to maintenance : Half-closed electric unit chamber design and battery side out function make it easy for maintenance work.

Comfortable operation : Equipped with EPS function and multifunctional finger joysticks bring you unmatched comfort.



Its battery capacity is up to 750AH and it will bring you long operation time.

Battery change platform is optional to help you take out the battery from the side.

Optional parts :

Fork camera

Side shift function

Preselector lifting height function

Fork horizon indicating lamp

Laser fork position indication

Battery trolley

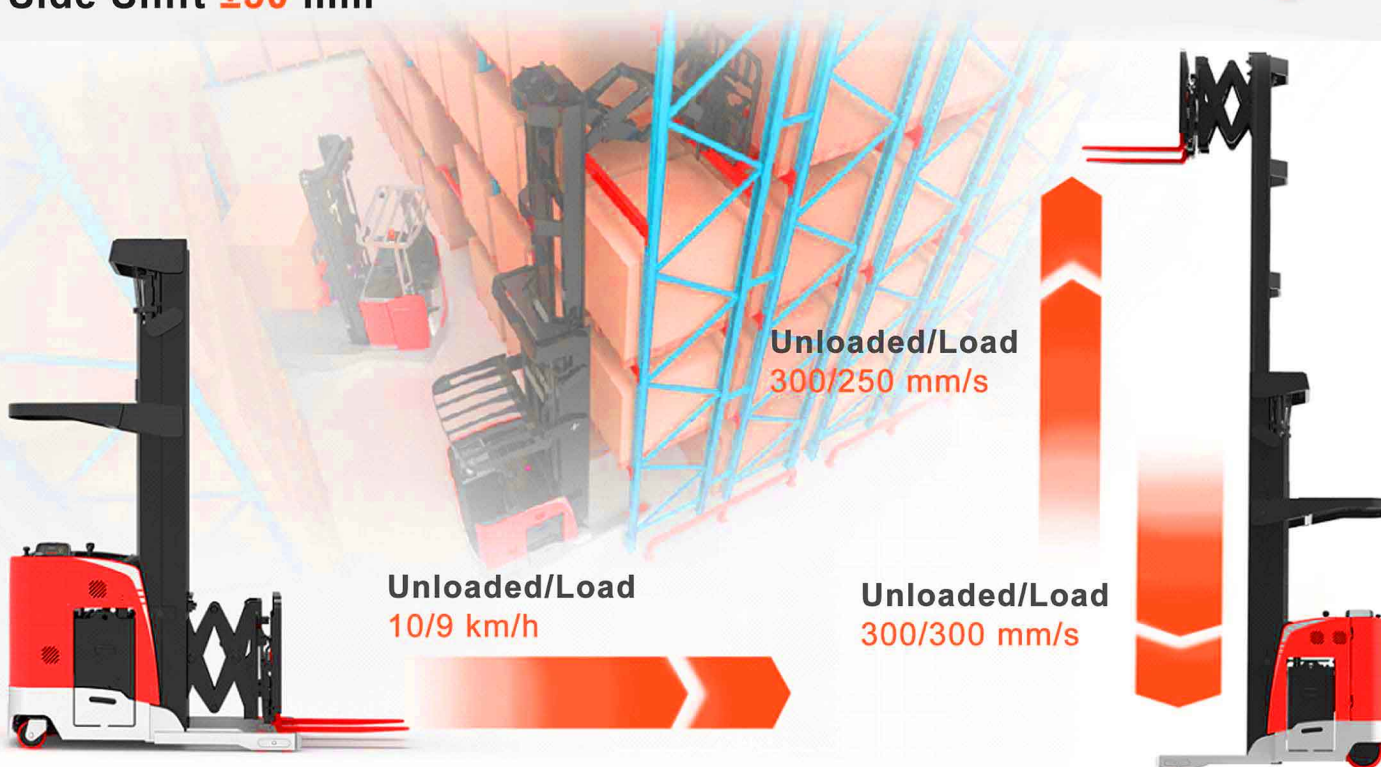
BatteryAutomatic replenishment device

Front light

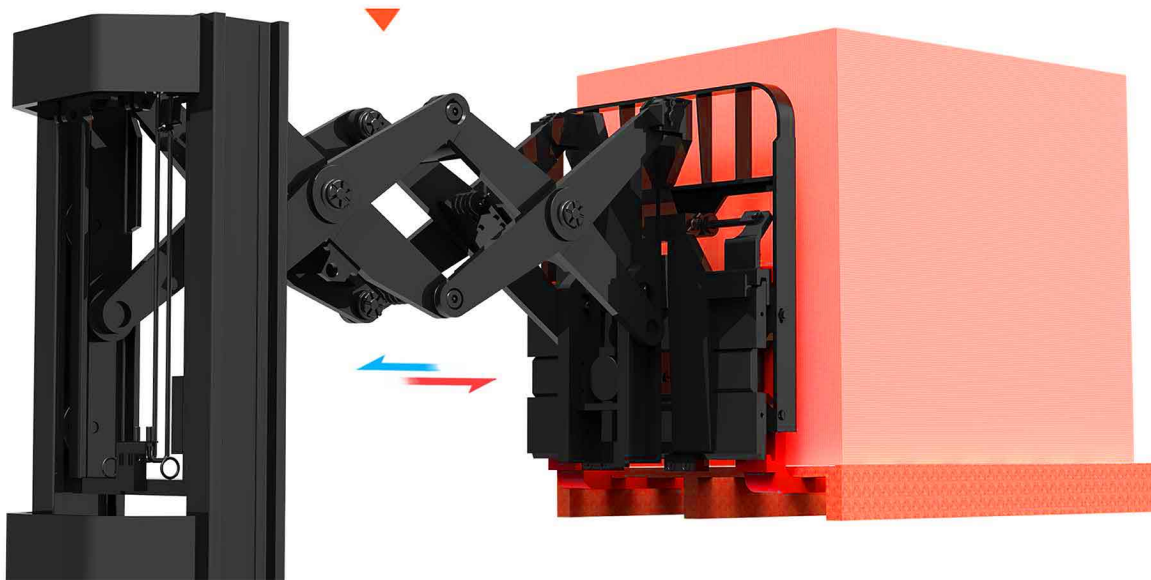
Working light



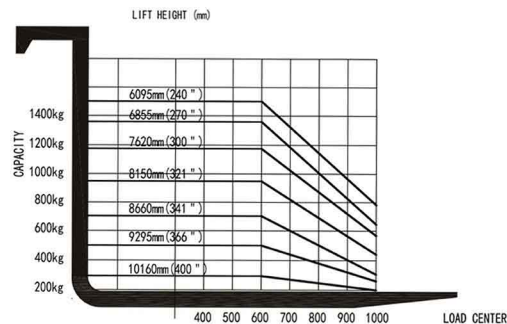
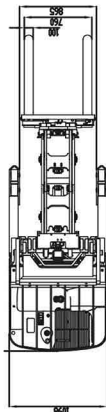
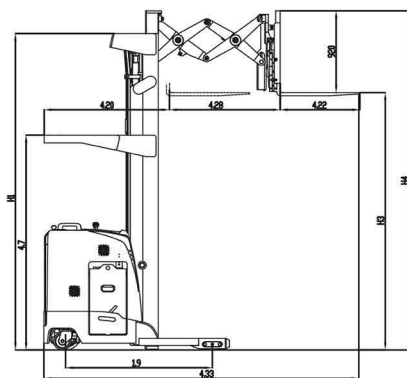
▲ Side Shift ± 50 mm



Maximum Reach distance can be **1080 mm**



Technical Specification



		Metric	
General Information	Model		DDR 114
	Power Type		
	Operator Type		Standing
	Load Capacity at load center	ib.(kg)	1400 kg
	Load Centre	in.(mm)	600mm
	Load Distance (forks retracted)	in.(mm)	287mm
	Wheel Base	in.(mm)	1650 mm
Weight	Truck Weight (without battery)	ib.(kg)	4180kg
Tyres	Tyre Type		PU
	Driving Wheels	in.(mm)	φ343mm×140mm
	Loading Wheels	in.(mm)	φ127mm×74mm
	Castor Wheel	in.(mm)	φ200mm×100mm
	Number of Wheels		1x,2/4
Dimensions	Fork Carriage Tilt Degree	°	3/4
	Lowered mast height	in.(mm)	3556mm
	Free Lift	in.(mm)	2642 mm
	Lift Height	in.(mm)	8100 mm
	Extended mast height	in.(mm)	9050 mm
	Overhead Guard Height	in.(mm)	2413mm
	Outtrigger Height	in.(mm)	130mm
	Headlength	in.(mm)	1604mm
	Overall Width	in.(mm)	1098 mm
	Fork Dimension	in.(mm)	40/100/1070
	Fork Carriage		2A
	Fork Carriage Width	in.(mm)	824mm
	Forks Width	in.(mm)	200-768mm
	Inside Distance between two support legs	in.(mm)	865-1270 mm
	Reach Distance	in.(mm)	1030mm
	Ground Clearance	in.(mm)	50mm
	Working Aisle Width •(800mm×1000mm)	in.(mm)	2700 mm
Performance	Turning Radius	in.(mm)	1895mm
	Overall Length	in.(mm)	2094 mm
	Travel Speed w./w.o. load		10/10 km/h
	Lift Speed w./w.o. load		0.33/0.5 m/s
	Lower Speed w./w.o. load		0.5/0.5 m/s
	Reach Speed		0.3m/s
	Brakes		Electric
	Battery Voltage	V/Ah	36 V/750Ah
	Battery Weight	kg	990kg