

TM12/16/20Li

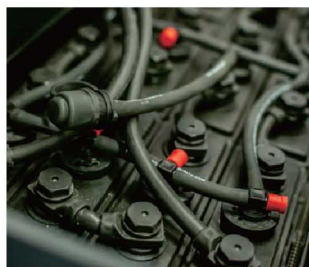
The range of stacker includes the wide list of models with capacity from 1200kg to 2000kg and lifting height up to 5500mm.

INTRODUCTION

The truck designed to be used with high efficiency even during their multi-shift operation. The configuration of the truck allows you to get more powerful and productive units thanks to its increased speed and different options of batteries, including Lithium solutions.



▶ The option of side battery replacement allows customers to use the truck with multi-shift operation and not to waste time on complicated procedure of battery replacement through the top. With help of specially designed trolley, the batteries can be replaced fast and effortlessly.



▶ The trucks can be equipped with the option of Aquatic- the system of fast refilling of distilled water in lead-acid batteries. The 2-ton pallet truck can be optionally equipped with the battery under 3VBS standard, which helps to reduce the length of the original truck and make it more compact (the standard battery is 2PzS).



▶ The model range can be equipped with Lithium batteries. The use of lithium solution will allow you to enjoy benefits of Lithium technology such as Fast charging, Opportunity charging, Maintenance free, Environmental-friendly, Smart Diagnosis of battery status, Lower cost of Total Ownership with long service life.

| Distinguishing mark | 1.2 | Manufacturer's type designation | | TM12(3600) | TM16(5500) | TM20(5500) |
|---------------------|------|---|----------------------|--------------------|--------------------|--------------------|
| | 1.3 | Power (battery ,diesel, petrol, gas, manual) | | | Battery | |
| | 1.4 | Operator type | | | Pedestrian | |
| | 1.5 | Load Capacity / rated load | Q (t) | 1.2 | 1.6 | 2.0 |
| | 1.6 | Load centre distance | c (mm) | | 600 | |
| | 1.8 | Load distance ,centre of drive axle to fork | x (mm) | | 647 | |
| | 1.9 | Wheelbase | y (mm) | 1167 | 1215 | 1450 |
| Weight | 2.1 | Service weight | kg | 1080 | 1380 | 1620 |
| | 2.2 | Axle loading, laden front/rear | kg | 830/1420 | 990/1940 | 1160/2410 |
| | 2.3 | Axle loading, unladen front/rear | kg | 750/300 | 890/440 | 1040/540 |
| Tires, chassis | 3.1 | Tires | | Polyurethane(PU) | | |
| | 3.2 | Tire size,front | Φxw (mm) | Φ230×70 | | |
| | 3.3 | Tire size,rear | Φxw (mm) | Φ54×70 | | |
| | 3.4 | Additional wheels(dimensions) | Φxw (mm) | Φ150×50 | | |
| | 3.5 | Wheels,number front/rear(x=driven wheels) | | 1x + 1 / 4 | | |
| | 3.6 | Tread, front | b ₁₀ (mm) | 510 | | |
| | 3.7 | Tread, rear | b ₁₁ (mm) | 390/505 | | |
| Dimensions | 4.2 | Lowered mast height | h ₁ (mm) | 2308 | 2400 | 2400 |
| | 4.3 | Free Lift height | h ₂ (mm) | 1760 | 1820 | 1820 |
| | 4.4 | Lift height | h ₃ (mm) | 3530 | 5430 | 5430 |
| | 4.5 | Extended mast height | h ₄ (mm) | 4088 | 6025 | 6025 |
| | 4.9 | Height of tiller in drive position min./ max. | h ₁₄ (mm) | | 950/1350 | |
| | 4.15 | Height, lowered | h ₁₃ (mm) | | 90 | |
| | 4.19 | Overall length | l ₁ (mm) | 1855 ¹⁾ | 1896 ¹⁾ | 1910 ¹⁾ |
| | 4.20 | Length to face of forks | l ₂ (mm) | 705 ¹⁾ | 746 ¹⁾ | 790 ¹⁾ |
| | 4.21 | Overall width | b ₁ (mm) | | 790 | |
| | 4.22 | Fork dimensions | s/e/l (mm) | | 60 / 180 / 1150 | |
| | 4.25 | Distance between fork-arms | b ₅ (mm) | | 570 /685 | |
| | 4.32 | Ground clearance, centre of wheelbase | m ₂ (mm) | 28 | 28 | 23 |
| | 4.33 | Aisle width for pallets 1000X1200 crossways | Ast (mm) | 2285 ¹⁾ | 2325 ¹⁾ | 2455 ¹⁾ |
| | 4.34 | Aisle width for pallets 800X1200 lengthways | Ast (mm) | 2250 ¹⁾ | 2290 ¹⁾ | 2420 ¹⁾ |
| | 4.35 | Turning radius | Wa (mm) | 1380 ¹⁾ | 1420 ¹⁾ | 1550 ¹⁾ |
| Performance data | 5.1 | Travel speed, laden/ unladen | km/h | 7.0/8.0 | 6.0/7.0 | 6.0/7.0 |
| | 5.2 | Lift speed, laden/ unladen | m/s | 0.09/0.14 | 0.13/0.20 | 0.13/0.20 |
| | 5.3 | Lowering speed, laden/ unladen | m/s | 0.25/0.20 | 0.28/0.23 | 0.28/0.23 |
| | 5.8 | Max. gradeability, laden/ unladen | % | 6/12 | 6/12 | 6/10 |
| | 5.10 | Service brake | | Electromagnetic | | |
| Electric- engine | 6.1 | Drive motor rating S2 60min | kW | 1.4 | 1.4 | 3 |
| | 6.2 | Lift motor rating at S3 4.5% | kW | 1.5/3.2 | 3.2 | 3.2 |
| | 6.3 | Battery acc. to DIN 43531/35/36 A, B, C, no | | 2VBS | 3VBS | 3PZS |
| | 6.4 | Battery voltage, nominal capacity K5 | V / Ah | 24/160-180 | 240/210-270 | 24/270-350 |
| | 6.5 | Battery weight +/-5% | kg | 155-175 | 185-235 | 235-285 |
| | 6.6 | Energy consumption acc: to VDI cycle | kWh/h | 0.95 | 1.34 | 1.70 |
| Additional data | 8.1 | Type of drive control | | AC- speed control | | |
| | 8.4 | Sound level at driver's ear acc. to EN 12053 | dB(A) | <69 | | |